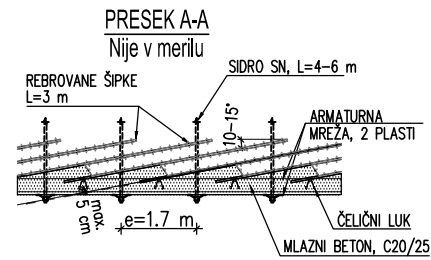
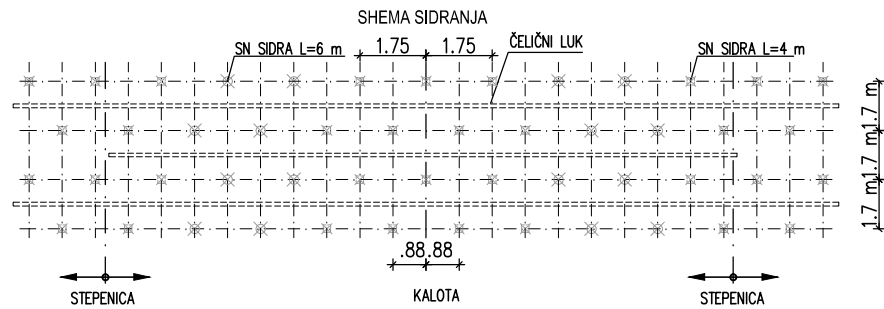
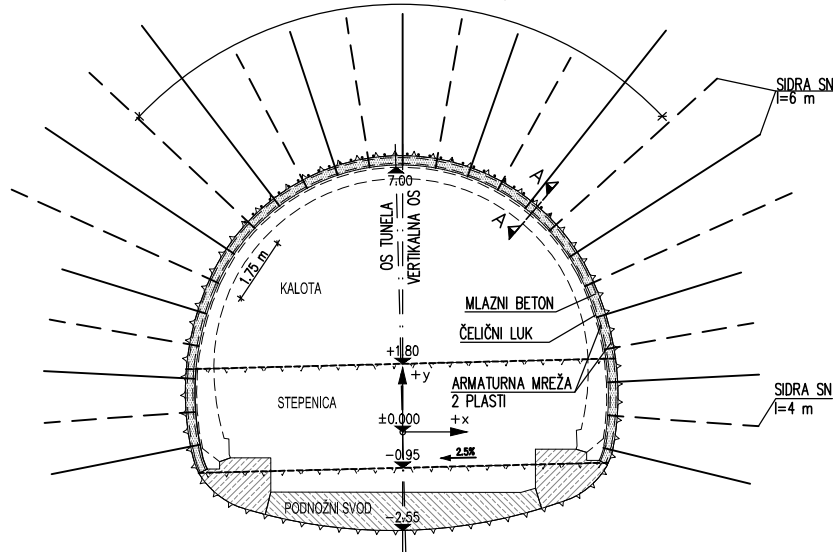


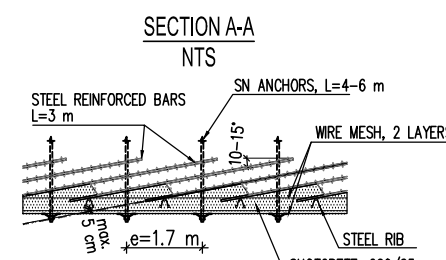
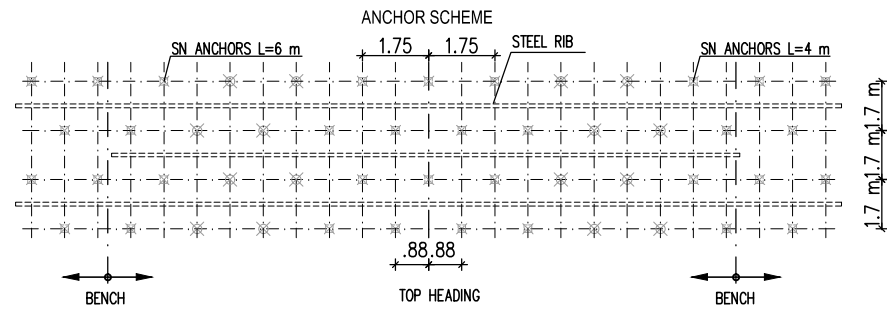
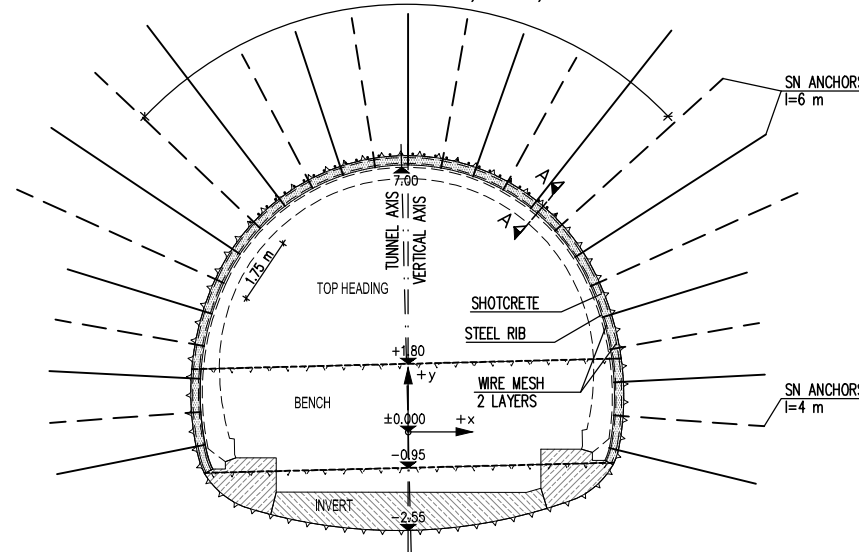
POTPORNI TIPI  
KALOTA K - 5/5,4  
STEPENICA S - 4/3,53  
PODNOŽNI SVOD TO - 5/2  
M 1:200

REBROVANE ŠIPKE  $\varnothing 28$  mm, l=3 m, e=30 cm



SUPPORT MEASURE  
TOP HEADING K - 5/5,4  
BENCH S - 4/3,53  
INVERT TO - 5/2  
M 1:200

STEEL REINFORCED BARS  $\varnothing 28$  mm, l=3 m, e=30 cm



POTPORNI TIP K-5/5,40; S-4/3,53; TO-5/2

| Maksimalni iskopni korak |      |
|--------------------------|------|
| T                        | 1,7m |
| B                        | 3,4m |
| I                        | 6,6m |

| LEGENDA |                        |
|---------|------------------------|
| T       | ... KALOTA             |
| B       | ... STEPENICA          |
| I       | ... PODNOŽNI SVOD      |
| F       | ... ISKOPNO ČELO       |
| R       | ... PLAFON             |
| S       | ... STRANA             |
| TI      | ... PRI. PODNOŽNI SVOD |

SUPPORT TYPE K-5/5,40; S-4/3,53; TO-5/2

| Maximum round length |      |
|----------------------|------|
| T                    | 1,7m |
| B                    | 3,4m |
| I                    | 6,6m |

| LEGENDA |                     |
|---------|---------------------|
| T       | ... TOP HEADING     |
| B       | ... BENCH           |
| I       | ... INVERT ARCH     |
| F       | ... EXCAVATION FACE |
| R       | ... ROOF            |
| S       | ... SIDEWALL        |
| TI      | ... TEMP. INVERT    |

| LOKACIJA      | VREME UGRADNJE                         | POTPORNE MERE   | Količina/m           |
|---------------|--|---|----------------------|
| KALOTA        | ISKOPNA KOLIČINA                       |   | 48.05 m <sup>3</sup> |
| F             | nakon iskopa                           | mlazni beton C20/25 za osiguranje čela, ds=5cm                  | 28.26 m <sup>2</sup> |
| R             | pre iskopa sledećeg koraka             | mlazni beton C20/25, ds=20cm                                    | 16.60 m <sup>2</sup> |
| R             | pre iskopa sledećeg koraka             | armaturna mreža Q189, 2 plasti (3,03kg/m <sup>2</sup> )         | 0.1006 t             |
| R             | pre iskopa sledećeg koraka             | čelični luk TH21  | 0.2043 t             |
| R             | najviše jedan korak za iskopni m čelom | SN sidra, l=4m  | 2.06 kos             |
| R             | najviše jedan korak za iskopni m čelom | SN sidra, l=6m  | 2.35 kos             |
| R             | pre iskopa sledećeg koraka             | rebrovane šipke u malter, l=3m                                  | 18.24 kos            |
| R             | pre iskopa sledećeg koraka             | brizgan beton za zapolni tev volumna dodatnega izkopa za sulice | 0.68 m <sup>3</sup>  |
| STEPENICA     | ISKOPNA KOLIČINA                       |   | 31.09 m <sup>3</sup> |
| S             | pre iskopa sledećeg koraka             | mlazni beton C20/25, ds=20cm                                    | 5.41 m <sup>2</sup>  |
| S             | pre iskopa sledećeg koraka             | armaturna mreža Q189, 2 plasti (3,03kg/m <sup>2</sup> )         | 0.0328 t             |
| S             | pre iskopa sledećeg koraka             | čelični luk TH21 (svak 2. korak)                                | 0.0333 t             |
| S             | najviše jedan korak za iskopni m čelom | SN sidra, l=4m  | 1.18 kos             |
| PODNOŽNI SVOD | ISKOPNA KOLIČINA                       |   | 13.15 m <sup>3</sup> |
| I             | nakon iskopa podnožnog svoda           | beton u podnožnom svodu C25/30                                  | 5.66 m <sup>2</sup>  |
| I             | nakon iskopa podnožnog svoda           | beton u tenelju C25/30  | 4.02 m <sup>2</sup>  |

NAPOMENA: KVANTITETI SU IZRAČUNATI NA TEKUĆI METAR TUNELA SA ISKOPNIM KORAKOM DUŽINE 3.0M. KVANTITE ISKOPA JE TEORETSKI I BEZ TOLERANCIJA.

| LOCATION    | TIME INSTALATION                      | ROCK SUPPORT  | Quantity/m           |
|-------------|---------------------------------------|---|----------------------|
| TOP HEADING | VOLUME OF EXCAVATION                  |   | 48.05 m <sup>3</sup> |
| F           | after excavation                      | shotcrete C25/30 sealing tunnel face, ds=5cm                    | 28.26 m <sup>2</sup> |
| R           | prior to excavation of next round     | shotcrete C20/25, ds=20cm                                       | 16.60 m <sup>2</sup> |
| R           | prior to excavation of next round     | wire mesh Q189, 2 layers (3,03kg/m <sup>2</sup> )               | 0.1006 to            |
| R           | prior to excavation of next round     | jeljeni segment TH21  | 0.2043 to            |
| R           | max. one round behind excavation face | SN anchor, l=4m   | 2.06 Pc              |
| R           | max. one round behind excavation face | SN anchor, l=6m   | 2.35 Pc              |
| R           | prior to excavation of next round     | Forepiling pipes, l=3m  | 18.24 Pc             |
| R           | prior to excavation of next round     | brizgan beton za zapolni tev volumna dodatnega izkopa za sulice | 0.68 m <sup>3</sup>  |
| BENCH       | VOLUME OF EXCAVATION                  |   | 31.09 m <sup>3</sup> |
| S           | prior to excavation of next round     | shotcrete C20/25, ds=20cm                                       | 5.41 m <sup>2</sup>  |
| S           | prior to excavation of next round     | wire mesh Q189, 2 layers (3,03kg/m <sup>2</sup> )               | 0.0328 to            |
| S           | prior to excavation of next round     | steel rib TH21 (every 2. round lenght)                          | 0.0333 to            |
| S           | max. one round behind excavation face | SN sidra, l=4m  | 1.18 Pc              |
| INVERT      | VOLUME OF EXCAVATION                  |   | 13.15 m <sup>3</sup> |
| I           | after excavation of invert            | Invert concrete C25/30  | 5.66 m <sup>2</sup>  |
| I           | after excavation of invert            | abutment concrete C25/30  | 4.02 m <sup>2</sup>  |

REMARK: QUANTITIES ARE CALCULATED FOR A ROUND LENGTH OF 1.7m EXCAVATION VOLUMES GIVEN IN THE TABLE ARE THEORETICAL WITHOUT ANY TOLERANCES

| br./no. | promena/change | datum/date | ime/name |
|---------|----------------|------------|----------|
|         |                |            |          |
|         |                |            |          |

Klijent/client:  JAVNO PREDUZETJE PUTEVI SRBIJE  
naslov/title: SRSDD Standardni crteži putnih detalja u Republici Srbiji  
SRSDD Serbian road standard detail drawings

crtež/drawing: Potporne mere  
Support measures